



Fann Software AnPIFile

Users' Guide

Version 1.1

October 3, 2011

Copyright © 2011, Fann Software
All rights reserved



<http://www.fannsoftware.com>
support@fannsoftware.com

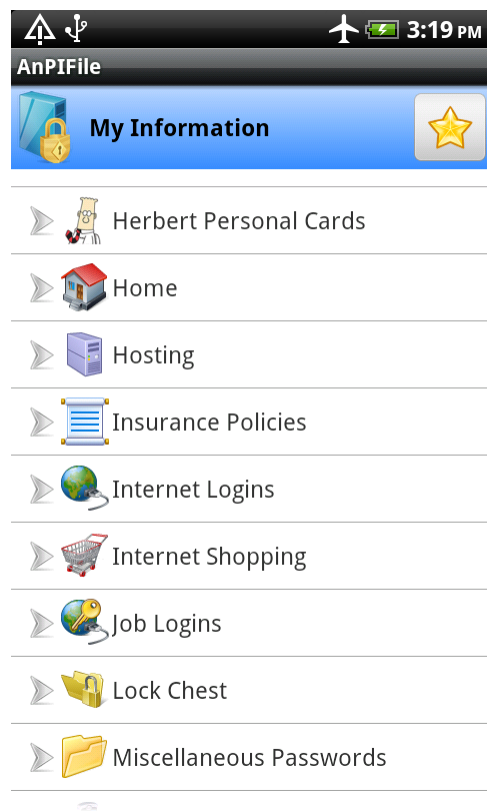
Overview	1
Using AnPIFile	2
Modify a Category	3
Create an Item	3
Modify an Item.....	4
Delete an Item/Category	4
Favourite List.....	4
Move an Item to another Category	5
Find an Item	5
Locking AnPIFile	5
Change Password.....	6
Change Field Descriptions and Ordering.....	6
Options.....	7
Import.....	7
Export	7

Overview

AnPIFile is a personal information manager. You can store any personal information that requires password protection such as credit cards, pins, logins, driver licenses, software keys, insurance policy numbers, bank account numbers, etc. Information is organized by categories. The data is encrypted with AES encryption algorithm using a user-defined password. Features:

- Touch-friendly user interface
- Handy preview
- Simple operations
- Favourite list
- Field ordering
- Field name customization
- Password generator
- Respective user interface design for tablets and phones

Using AnPIFile



On the first run of AnPIFile, you will be prompted to set a password. Please enter an alphanumeric password that is easy to remember but hard for others to guess.

Before creating new items, you must define one or more categories. Categories help you to organize different pieces of information. For example, Credit Cards, Logins, Bank Accounts, etc. To define a category:

1. In main screen, press the Menu key and select New.
2. Enter a name for the category.
3. Select a desired icon.
4. Touch the Save button.

To create a copy of a category:

1. Touch and hold on the category to display the context menu.
2. Select Create copy.
3. Change the information if desired.
4. Touch the Save button.

Once categories are defined, you can create new item(s) under each category.

To view the items of a category, touch the category from the main screen. Press the Back key to return to the main screen.

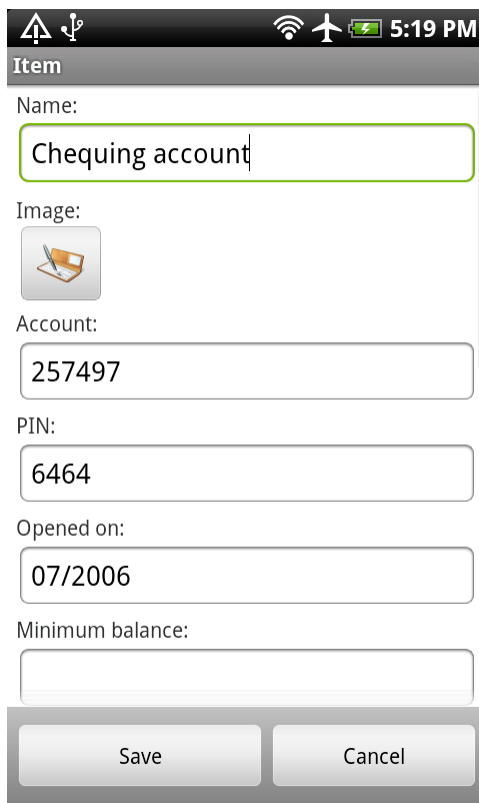
Modify a Category

1. Touch and hold on the category to display the context menu.
2. Select Edit.
3. Make the necessary changes.
4. Touch the Save button.

Note:

- If an edit screen is opened, AnPIFile will not lock automatically. Therefore, you should not leave the edit screen open and switch to other applications.

Create an Item



The screenshot shows the 'Create an Item' screen in AnPIFile. The screen has a dark header with a home button, a signal strength indicator, a Wi-Fi icon, an airplane mode icon, a battery icon, and the time '5:19 PM'. Below the header is a title bar labeled 'Item'. The form contains the following fields:

- Name:** A text input field containing 'Chequing account'.
- Image:** A selection field showing a laptop icon.
- Account:** A text input field containing '257497'.
- PIN:** A text input field containing '6464'.
- Opened on:** A date input field containing '07/2006'.
- Minimum balance:** An empty text input field.

At the bottom of the screen, there are two buttons: 'Save' and 'Cancel'.

1. Select the category.
2. Press the Menu key and select New.
3. Select a type from the list.
4. Enter a name for the item.
5. Select a desired icon.
6. Enter the information.
7. Touch the Save button.

To create a copy of an item:

1. Touch and hold on the item to display the context menu.
2. Select Create copy.
3. Change the information if desired.
4. Touch the Save button.

To generate a password:

1. Touch and hold on the field to display the context menu.
2. Select Insert password.
3. Enter/select the desired criteria.
4. Touch the Generate button.
5. (Optional) Repeat step 4 until a desired password is generated.
6. Touch the Insert button.

Modify an Item

1. Touch and hold on the item to display the context menu.
2. Select Edit.
3. Make the necessary changes.
4. Touch the Save button.

Delete an Item/Category

1. Touch and hold on the item/category to display the context menu.
2. Select Delete.
3. Touch the Delete button to confirm.


Note: All items of the category will also be deleted.

Favourite List

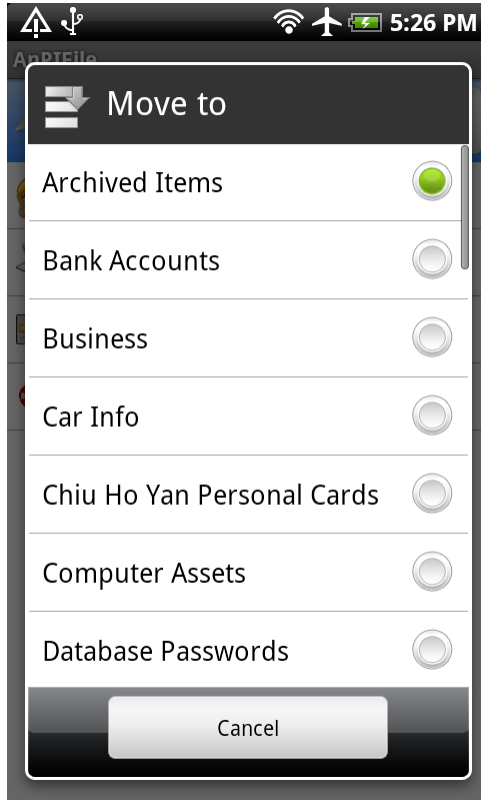
A favourite list can be created to provide easy access to most frequently used items.

To add/remove an item to the favourite list:

1. Touch and hold on the item to display the context menu.
2. Select Favourite.

Touch the  button from the main screen to view the favourite list.

Move an Item to another Category



1. Touch and hold on the item to display the context menu.
2. Select Move to.
3. Select the destination category from the list.

Find an Item

1. Press the Search key, or press the Menu key and select Search.
2. Enter the search text.
3. Touch the Search button.
4. AnPIFile will display a list of matched items, or display a message for no matched found.
5. To goto a matched item, select the item from the list.
6. For the next matched item, press the Back key to return to the list.

Locking AnPIFile

To lock AnPIFile manually, press the Menu key and select Lock.

Note:

- Touch the Close button in the password screen will exit AnPIFile.

Change Password

1. Press the Menu key and select Change password.
2. Enter the current password.
3. Enter a new password.
4. Enter the new password again to confirm.
5. Touch the OK button.

Change Field Descriptions and Ordering

The screenshot shows a mobile application interface for editing a 'Credit/Bank Card 1' field. The screen displays a list of fields: Card no., PIN, Security code, Name on card, Expires on, Credit limit, Web, and Report lost. At the bottom, there are three buttons: 'Rename Type', 'Save', and 'Cancel'.

1. Press the Menu key and select Edit field type.
2. Select a type from the list.
3. (Optional) Touch the Rename Type button to change the name of the type.
4. Select the field name to edit.
5. Enter the desired description and touch the OK button.
6. (Optional) Repeat step 4 to 5 until you are done.
7. Touch and hold on the field name to display the context menu, select Move up/Move down to change the order of the fields.
8. (Optional) Press the Menu key and select Set to defaults to restore the default descriptions.
9. Touch the Save button.

Options

To change options, press the Menu key and select More, select Options.

Import

To import data in XML format:

1. Create a XML file named AnPIFileImport.xml. For details on the file format, please refer to <http://www.fannsoftware.com/apflImport.html>.
2. Move the XML file to the root directory of the microSD card.
3. Press the Menu key and select More, select Import.
4. Touch the Import button.

Export

To export data in XML format:

1. Press the Menu key and select More, select Export.
2. Touch the Export button.
3. A XML file named AnPIFileData.xml will be created on the root directory of the microSD card.