



# **Fann Software AnPIFile**

## **Users' Guide (Tablet)**

### **Version 1.1**

October 3, 2011

Copyright © 2011, Fann Software  
All rights reserved



<http://www.fannsoftware.com>  
[support@fannsoftware.com](mailto:support@fannsoftware.com)

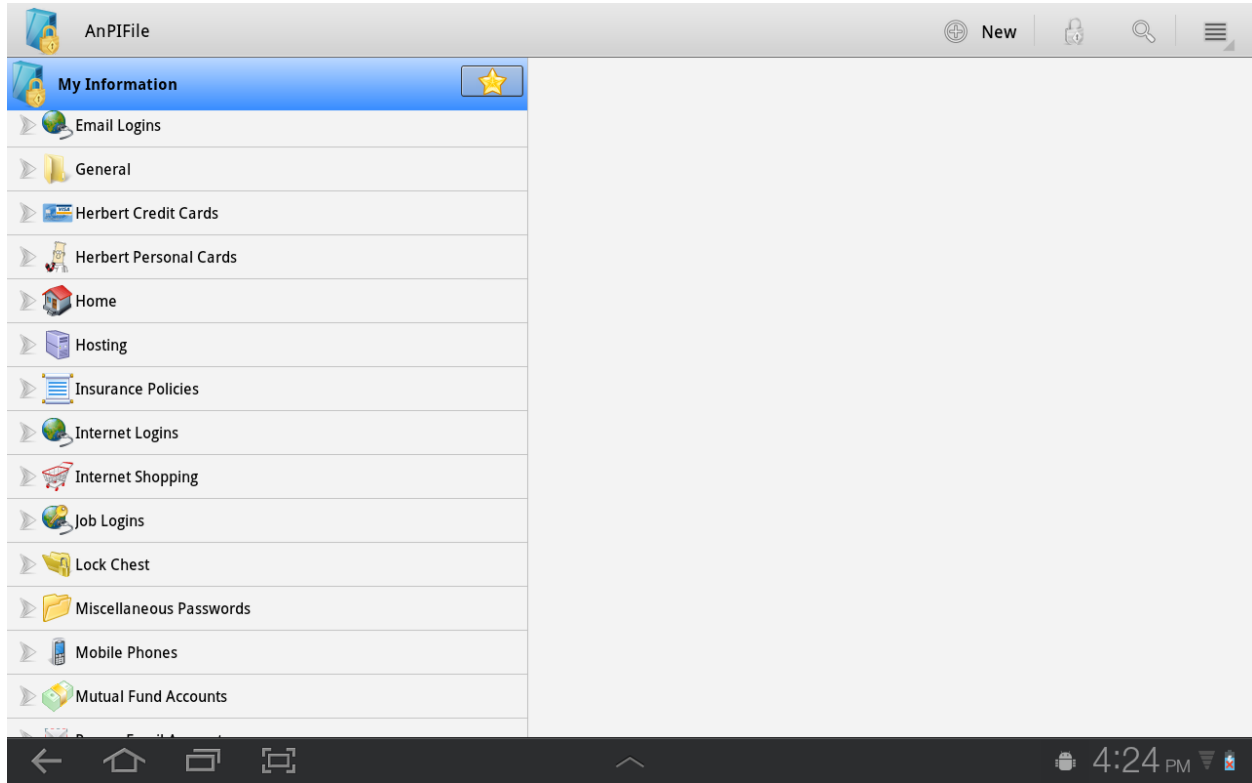
Overview .....	1
Using AnPIFile .....	2
Modify a Category .....	3
Create an Item .....	3
Modify an Item.....	4
Delete an Item/Category .....	4
Favourite List.....	4
Move an Item to another Category .....	5
Find an Item .....	5
Locking AnPIFile .....	5
Change Password.....	6
Change Field Descriptions and Ordering.....	6
Options.....	7
Import.....	7
Export .....	7

# Overview

AnPIFile is a personal information manager. You can store any personal information that requires password protection such as credit cards, pins, logins, driver licenses, software keys, insurance policy numbers, bank account numbers, etc. Information is organized by categories. The data is encrypted with AES encryption algorithm using a user-defined password. Features:

- Touch-friendly user interface
- Handy preview
- Simple operations
- Favourite list
- Field ordering
- Field name customization
- Password generator
- Respective user interface design for tablets and phones

# Using AnPIFile



On the first run of AnPIFile, you will be prompted to set a password. Please enter an alphanumeric password that is easy to remember but hard for others to guess.

Before creating new items, you must define one or more categories. Categories help you to organize different pieces of information. For example, Credit Cards, Logins, Bank Accounts, etc. To define a category:

1. In main screen, touch the New action item.
2. Enter a name for the category.
3. Select a desired icon.
4. Touch the Save button.

To create a copy of a category:

1. Touch and hold on the category to display the context menu.
2. Select Create copy.
3. Change the information if desired.
4. Touch the Save button.

Once categories are defined, you can create new item(s) under each category.

To view the items of a category, touch the category from the main screen. Touch the Back key or the blue header to return to the main screen.

## Modify a Category


1. Touch and hold on the category to display the context menu.
2. Select Edit.
3. Make the necessary changes.
4. Touch the Save button.

### Note:

- If an edit screen is opened, AnPIFile will not lock automatically. Therefore, you should not leave the edit screen open and switch to other applications.

## Create an Item

The screenshot shows the 'Item' creation form. The title bar contains a lock icon, the text 'Item', and 'Save' and 'Cancel' buttons. The form fields are as follows:

Name:	Chequing account
Image:	
Account:	257497
PIN:	6464
Opened on:	07/2006
Minimum balance:	
Withdraw limit:	2400
Web:	http://www.banking.com
Other info:	yes
Service line:	
Branch number:	

1. Select the category.
2. Touch the New action item.
3. Select a type from the list.
4. Enter a name for the item.
5. Select a desired icon.
6. Enter the information.
7. Touch the Save button.

To create a copy of an item:

1. Touch and hold on the item to display the context menu.
2. Select Create copy.
3. Change the information if desired.
4. Touch the Save button.

To generate a password:

1. Touch and hold on the field to display the context menu.
2. Select Insert password.
3. Enter/select the desired criteria.
4. Touch the Generate button.
5. (Optional) Repeat step 4 until a desired password is generated.
6. Touch the Insert button.

## Modify an Item

1. Touch and hold on the item to display the context menu.
2. Select Edit.
3. Make the necessary changes.
4. Touch the Save button.

## Delete an Item/Category

1. Touch and hold on the item/category to display the context menu.
2. Select Delete.
3. Touch the Delete button to confirm.


**Note: All items of the category will also be deleted.**

## Favourite List

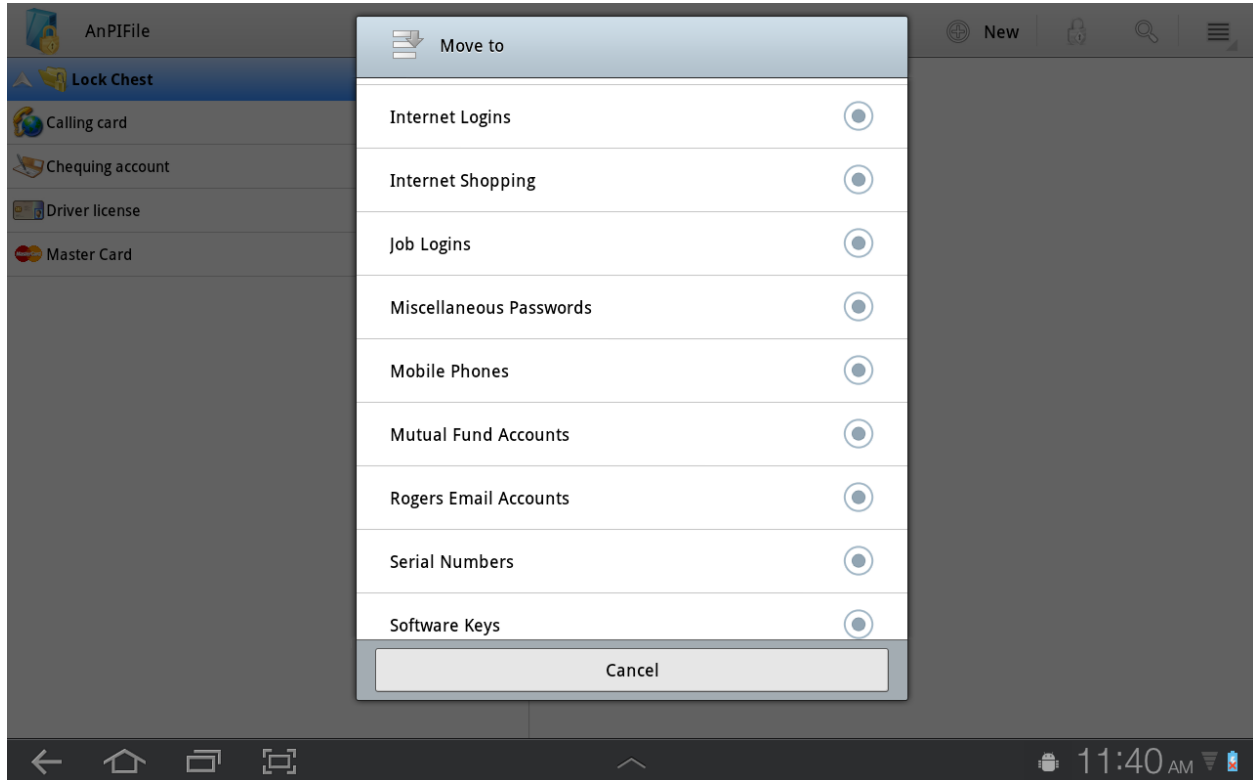
A favourite list can be created to provide easy access to most frequently used items.

To add/remove an item to the favourite list:

1. Touch and hold on the item to display the context menu.
2. Select Favourite.

Touch the  button to view the favourite list.

## Move an Item to another Category



1. Touch and hold on the item to display the context menu.
2. Select Move to.
3. Select the destination category from the list.

## Find an Item

1. Touch the Search action item.
2. Enter the search text and touch the Enter key.
3. AnPIFile will display a list of matched items, or display a message for no matched found.
4. To goto a matched item, select the item from the list.

## Locking AnPIFile

To lock AnPIFile manually, touch the Lock action item.


### Note:

- Touch the Close button in the password screen will exit AnPIFile.

## Change Password

1. Touch the Menu action item and select Change password.
2. Enter the current password.
3. Enter a new password.
4. Enter the new password again to confirm.
5. Touch the OK button.

## Change Field Descriptions and Ordering



Credit/Bank Card 1

Card no.:

PIN:

Security code:

Name on card:

Expires on:

Credit limit:

Web:

Report lost:

Service:

Mother maiden name:

Rename Type Save Cancel

4:27 PM

1. Touch the Menu action item and select Edit field type.
2. Select a type from the list.
3. (Optional) Touch the Rename Type button to change the name of the type.
4. Select the field name to edit.
5. Enter the desired description and touch the OK button.
6. (Optional) Repeat step 4 to 5 until you are done.
7. Touch and hold on the field name to display the context menu, select Move up/Move down to change the order of the fields.
8. (Optional) Touch the Menu action item and select Set to defaults to restore the default descriptions.
9. Touch the Save button.

## Options

To change options, touch the Menu action item and select Options.

## Import

To import data in XML format:

1. Create a XML file named AnPIFileImport.xml. For details on the file format, please refer to <http://www.fannsoftware.com/apflImport.html>.
2. Move the XML file to the root directory of the storage card.
3. Touch the Menu action item and select Import.
4. Touch the Import button.

## Export

To export data in XML format:

1. Touch the Menu action item and select Export.
2. Touch the Export button.
3. A XML file named AnPIFileData.xml will be created on the root directory of the storage card.